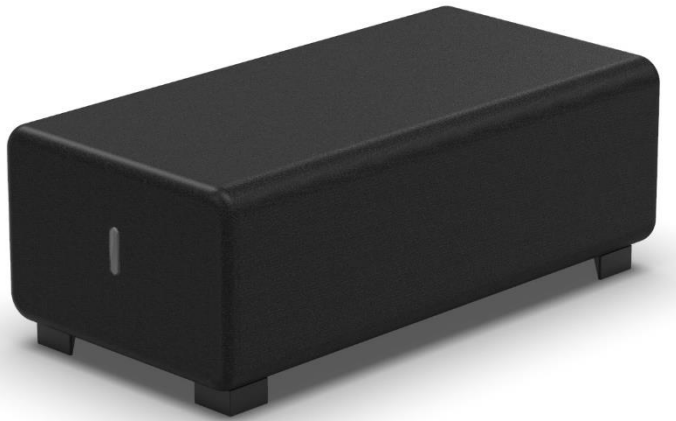


HIZIAP2

2 seater pouffe

Choose the HIZIA range and give yourself endless possibilities to suit your needs



Pouf faux leather
(ANTI-FIRE certified)



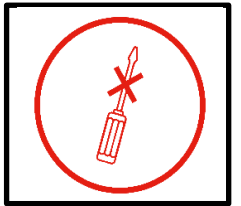
Solid, sturdy wooden frame
30kg/m3 polyurethane foam
for optimum comfort



Can be used alone or in
combination with other elements
for infinite possibilities



Easy fixing and assembly
For connecting modules together



This **product** is environmentally friendly
and **100% recyclable**

1 compact **package** for a reduced CO2 impact
and **100% recyclable**



Discover the 1-seater pouffe from the modular range, offering infinite customisation possibilities. It can be used on its own or combined with other elements, and is available in a range of fabrics such as polyester or faux leather, with a vast choice of colours. You can also combine wooden modules to give rhythm and break up lines (armrest, table with 45° angle, document holder).



Create visually rhythmic and colourful compositions, ideal for waiting areas, lounges, reception areas, offices or hotels. Transform your spaces!

HIZIAP2

2 seater pouffe

Choose the HIZIA range and give yourself endless possibilities to suit your needs

PRODUCT FEATURES	
Reference	HIZIAP2 SN
EAN	3129710018642
Materials	Structure : wood
	Seat: polyurethane foam (density 30kg/m3)
	Fabric : Faux Leather Norm : ANTI-FIRE
Colours	Grey Anthracite
Product dimensions	Height: 45 (with feet)
	Foot: 4.5 cm
	Width: 120 cm
	Depth: 60 cm
	Weight : 16,5 kg
Environmental impact	100% recyclable
Origin	French design and development - Manufacturing in Portugal
Guarantee	2 years
Repairability index	10
Spare part	ALBA undertakes to supply all spare parts for 5 years (See conditions with your dealer/distributor).
DIMENSIONS PACKAGING	
* Sales unit (1xUV) carton	Dim. : 122 x 62 x 46 cm
	Weight : 17 kg
* Master carton (1xUV)	Dim. : 122 x 62 x 46 cm
	Weight : 17 kg
Environmental impact	100% recyclable



Scan to see our brochure